

Original Article

In vitro induction of odontogenic activity of human dental pulp stem cells by white Portland cement enriched with zirconium oxide and zinc oxide components

Saeed Rahimi¹ • Sadegh Salarinasab^{2*} • Negin Ghasemi¹ • Reza Rahbarghazi^{3,4} • Shahriar Shahi¹ • Amin Salem Milani¹ • Baharak Divband⁵ • Paria Davoudi⁶

¹Dental and Periodontal Research Center, Department of Endodontics, Faculty of Dentistry, Tabriz university of Medical Sciences, Tabriz, Iran

²Department of Biochemistry and Clinical Laboratories, Faculty of Medicine, Tabriz University of Medical Sciences, Tabriz, Iran

³Department of Applied Cell Sciences, Faculty of Advanced Medical Sciences, Tabriz University of Medical Sciences, Tabriz, Iran

⁴Stem Cell Research Center, Tabriz University of Medical Sciences, Tabriz, Iran

⁵Department of Inorganic Chemistry, Faculty of Chemistry, University of Tabriz, Tabriz, Iran

⁶Department of Endodontics, Faculty of Dentistry, Tabriz University of Medical Sciences, Tabriz, Iran

*Corresponding Author; E-mail: dparial370@yahoo.com

Received: 7 September 2018; Accepted: 5 February 2019

J Dent Res Dent Clin Dent Prospect 2019; 13(1):3-10|doi: 10.15171/joddd.2019.001

This article is available from: <https://joddd.tbzmed.ac.ir>

© 2019 Rahimi et al. This is an Open Access article published and distributed by Tabriz University of Medical Sciences under the terms of the Creative Commons Attribution License (<http://creativecommons.org/licenses/by/4.0>), which permits unrestricted use, distribution, and reproduction in any medium, provided the original work is properly cited.

Abstract

Background. The aim of this in vitro study was to investigate the effect of zinc oxide (ZnO) and zirconium oxide (ZrO₂) microparticles (MPs) and nanoparticles (NPs) in combination with white Portland cement (WPC) on odontogenic capacity of human dental pulp stem cells over a period of 21 days.

Methods. Synthesized ZnO and ZrO₂ particles were characterized using scanning electron microscopy and transmission electron microscopy. The viability of human dental pulp stem cells was measured by a 3-(4,5-dimethylthiazolyl-2-yl)-2,5-diphenyltetrazolium bromide assay at 7-, 14- and 21-day intervals after seeding on WPC disks enriched with ZnO and ZrO₂ MPs and NPs. Odontogenic potential of ZnO and ZrO₂ particles in combination with WPC was investigated by alkaline phosphatase (ALP) activity and ionized calcium level of supernatant culture media at different time intervals. Data were analyzed using one-way ANOVA and post hoc Tukey tests.

Results. All the materials exhibited cell viability over a 21-day period, except for WPC with ZnO NPs on day 7, although it was not statistically significant ($P > 0.05$). The ALP activity and ionized calcium level increased in all the groups compared to the control group ($P < 0.05$). ZnO NPs had superior effect on odontogenic activity and calcium ion release compared to ZnO MPs ($P = 0.046$). There was no significant difference between ZrO₂ MPs and NPs in odontogenic activity ($P > 0.05$).

Conclusion. WPC enriched with ZnO and ZrO₂ increased ALP activity and calcium ion release of human dental pulp stem cells over a period of 21 days in vitro.

Key words: Human dental pulp stem cells, odontogenic differentiation, white Portland cement, zinc oxide nanoparticles, zirconium oxide nanoparticles.

Introduction

Manipulation and regulation of stem cell (SC) dynamics, especially dental SCs, is an inevitable factor in regenerative procedures.¹ Human dental pulp SCs (HDPSCs), residing in the dental pulp, can easily trans-differentiate into different cell types notably odontoblasts and osteoblasts.² HDPSCs have a potential to differentiate into mature cell type by expressing factors such as odontoblast differentiation markers, dentin sialophosphoprotein (DSPP) and dentin matrix protein 1 (DMP-1). Commensurate with this statement, alkaline phosphatase (ALP) activity is also induced during odontogenic differentiation of HDPSCs, with a crucial role in mineralization and acquisition of dentin-like structures.³

Considering the distinct structure of dentin and the existence of hard tissues, it is essential to deliver SCs to the injured site by using appropriate scaffolds protecting transplanted cells from mechanical insult while providing a 3D structure for normal cell arrangement and cell-to-cell communication.⁴ The applied scaffolds must be biocompatible with the ability to stimulate repair by formation of mineralized tissues. Provision of antimicrobial activity, sealing ability, dimensional stability and radiopacity are other properties required for the regeneration of the target sites.⁵

Currently, one of the most popular dental materials used in the field of regenerative endodontics is mineral trioxide aggregate (MTA), a derivate of Portland cement (PC), which is used extensively for the induction of bio-mineralization.⁶ Some disadvantages of MTA are prolonged therapeutic approach, difficult handling, dental discoloration and some cytotoxic effects due to the presence of bismuth oxide (BO) in its chemical structure as a radiopacifier.⁷⁻¹² The pure PC alone could induce the expression of dentin-associated markers but it lacks radiopacity, making it inappropriate for clinical use.¹³ To circumvent these limitations, many suitable radiopacifying agents have been proposed to date, notably zirconium oxide (ZrO₂) and zinc oxide (ZnO).^{14,15} Evidence has shown some biological activities for ZrO₂ and ZnO particles such as calcium release, antibacterial effects and pH stability.¹⁶⁻¹⁹ Provision of nano- and/or micro-sized particles helps ZnO promote the functional action of osteoblasts while increasing the bactericidal effects.²⁰ The construction of ZrO₂ nanoparticles (NPs) was found to improve the physicochemical properties of PC.^{17,21}

Thus, in this in vitro study, we aimed to investigate

the effects of incorporation of ZnO and ZrO₂ micro-particles (MPs)/NPs into white PC (WPC) on the odontogenic capacity of HDPSCs over a period of 21 days.

Methods

Synthesis of Zirconium Oxide and Zinc Oxide Micro- and Nanoparticles

The synthesis of MPs and NPs was performed in the Laboratory of Nanotechnology, Chemistry Institute of Tabriz, Iran. To synthesize ZrO₂ MPs, anhydrous ZrCl₄ was heated at 700°C for 7 hours. ZrO₂ NPs were also prepared by dissolving anhydrous ZrCl₄ in 3M HCl solution at 40°C for 3 hours. Thereafter, 20 mL of ethylene glycol, as an esterification agent, was overlaid under vigorously stirring. The solution was stirred for a period of 12 hours, followed by heating to 80°C for 4 hours to form a yellow participate. Finally, the suspension was centrifuged at 10000 rpm, washed and calcined at 450°C for 5 hours.

In order to prepare ZnO MPs, zinc acetylacetonate hydrate was heated at 700°C for 7 hours. To synthesize ZnO NPs, zinc acetylacetonate hydrate was dissolved in 1M HNO₃ solution and citric acid for 3 hours. Similar to the preparation of ZrO₂ NPs, 20 mL of ethylene glycol was added to the solution, followed by the above-mentioned procedures.

SEM and TEM Analysis of Synthesized Particles

The morphological features of the synthesized MPs and NPs were characterized using scanning electron microscopy (SEM; Model: MR1A3-FEG-SEM Tescan, Brno, Czech,) and transmission electron microscopy (Zeiss LEO 912 Omega, TEM) for NPs, respectively (Figure 1).

Sample Preparation

In the current study, 6 experimental groups were established (Table 1). A ratio of 30% radiopacifier (the synthesized ZnO/ZrO₂ components) and 70% WPC (Tehran Cement Co., Tehran, Iran) was used. The WPC+ZnO MPs, WPC+ZnO NPs, WPC+ZrO₂ MPs

Table 1. The experimental groups

Group	Material
Control (Plastic surface)	-
WPC	WPC
WPC + ZnO MPs	WPC (70%) + ZnO MPs (30%)
WPC + ZnO NPs	WPC (70%) + ZnO NPs (30%)
WPC + ZrO ₂ MPs	WPC (70%) + ZrO ₂ MPs (30%)
WPC + ZrO ₂ NPs	WPC (70%) + ZrO ₂ NPs (30%)

White Portland cement (WPC); Zinc oxide (ZnO); Zirconium oxide (ZrO₂); Microparticles (MPs); Nanoparticles (NPs)

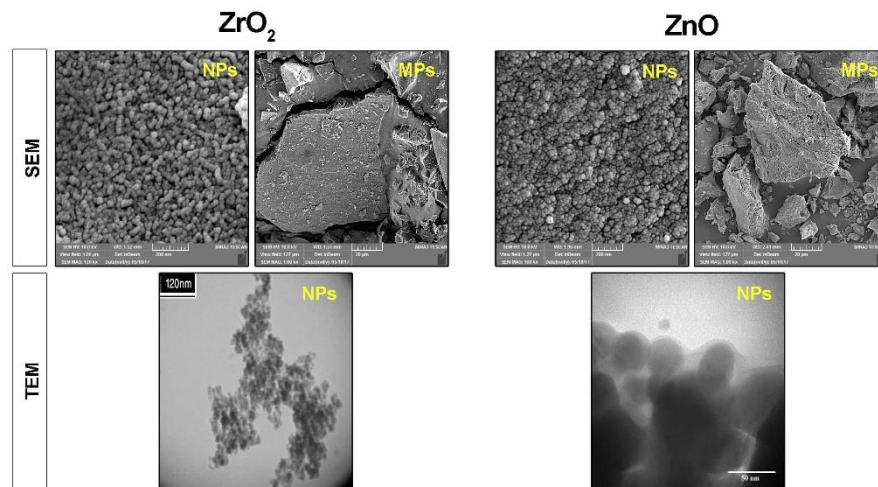


Figure 1. Representative images of ZrO₂ and ZnO particles analyzed by SEM and TEM techniques.

and WPC+ ZrO₂ NPs were manipulated using a powder-to-liquid (distilled water) ratio of 1 g per 0.33 mL, providing proper handling and consistency. Pure WPC was also manipulated with this ratio. All these manipulations were carried out under aseptic conditions.

Based on different analyses carried out in this experiment, disks with different diameters and 2 mm in thickness were prepared. To preserve the consistency, the disks were wrapped in pieces of moist gauze and incubated for 24 hours in a closed container. To perform cell culture and in vitro tests, disks were first sterilized using ethylene dioxide gas sterilization and then placed on the bottom surface of each well and washed two times with phosphate-buffered saline before cell culture.

Cell Culture

In this study, we used human dental pulp stem cell line (HDPSCs; Royan Institute, Tehran, Iran). HDPSCs were cultured and expanded in low-content glucose Dulbecco's modified Eagle medium (DMEM/LG; Gibco), with 10% fetal bovine serum (FBS; Gibco) and 1% penicillin-streptomycin (Biosera). The culture plates were maintained at 37°C in a humidified atmosphere with 5% CO₂. The cells between passages 3 to 6 were subjected to various experiments.

MTT Assay

The cytotoxic effect of materials was evaluated by using (4,5-dimethylthiazol-2-yl)-2,5-diphenyltetrazolium bromide colorimetric assay [Mosmann's tetrazolium toxicity (MTT) assay] (Sigma Chemical Co., St Louis, MO, USA). The disks were placed on the bottom surface of each well of 96-well plates and 1 mL

of DMEM/LG medium with 1% FBS containing 1×10^5 HDPSCs was overlaid. After 7, 14 and 21 days, the supernatant was discarded and disks were incubated with 100 μ L of MTT (5 mg/mL) for 4 hours. Thereafter, 50 μ L of dimethyl sulfoxide (DMSO) were added and the absorbance was read by a microplate reader (BioTek) at a wavelength of 450 nm. The percentage of viable cells was represented as percentage of control.

Alkaline Phosphatase Activity

In order to confirm the odontogenic/osteogenic capacity of treated cement on HDPSCs, ALP activity was measured at 7-, 14- and 21-day intervals after seeding on the materials. To this end, 1×10^5 HDPSCs was added to each well of 24-well plates and the supernatant was collected from each group and centrifuged at 400 g for 5 minutes. Thereafter, ALP activity was calculated for each group by using an ELISA kit (Roche Hitachi 912, Germany). Finally, the amount of ALP activity was reported as IU/L.

Calcium Ion Level

The supernatant of each well of 24-well plates after adding 1×10^5 HDPSCs was collected and after centrifugation at 400 g for 5 minutes, the total calcium ion content was measured by using an AutoAnalyzer (Roche Hitachi 912, Germany) on days 7, 14 and 21.

Statistical Analysis

All in vitro analyses were performed in triplicates. Data were presented as mean \pm SD and analyzed using one-way ANOVA with post hoc Tukey tests using SPSS 20.0 (SPSS Inc., Chicago, IL). The significant level was set at $P < 0.05$.

Results

Cell Viability

According to data from MTT assay, increased cell viability was observed in pure WPC and WPC with ZnO MPs, ZrO₂ MPs and NPs compared with the control group over a period of 21 days. Notably, WPC+ZnO NP group exhibited decreased cell survival rate on day 7 but it was not statistically significant ($P>0.05$), and this value reached levels higher than the matched-control on days 14 and 21 (Figure 2).

Alkaline Phosphatase Activity

In light of ALP activity, the ELISA assay showed significant differences in ALP activity in groups over a period of 21 days ($P<0.05$). On day 7, there was a statistically significant ALP activity increase in all the groups in comparison with the control group. Compared to cells grown on WPC+ZnO MP surfaces, HDPSCs juxtaposition to WPC+ZnO NPs resulted in a superior ALP activity ($P_{\text{day 7}}=0.046$, $P_{\text{day 14}}=0.01$). No significant difference was observed in ALP activity between WPC+ZrO₂ MP and WPC+ZrO₂ NP groups ($P>0.05$). On day 14, significant differences in ALP activity were detected in WPC and WPC+ZnO NPs ($P<0.05$). The level of ALP activity decreased on day 21 in comparison with matched-groups of day 7. Although the level of ALP activity was more than the

control group in all the groups 21 days after cell culture, it was not statistically significant ($P>0.05$; Figure 3).

Ionized Calcium Level

All the materials used in the current experiment exhibited an increased ionized calcium level in the supernatant in comparison with the control group at the 3 time intervals ($P<0.05$). On day 14, a superior effect of WPC+ZnO NPs and WPC alone was observed on the ionized calcium content ($P<0.05$). Based on our data, the calcium level decreased but remained significant compared with cells from 7- and 14-day time intervals (Figure 4).

Discussion

Stimulation of odontogenic differentiation and biomineralization is an important characteristic of materials used in vital pulp therapy procedures.⁵ By having biocompatibility and sealing ability, MTA is the choice material in vivo, but addition of BO to the composite has resulted in some drawbacks.^{9,11} Therefore, recent studies have focused on introducing modified MTA or novel materials based on PC to circumvent these limitations by using various NPs and MPs on suitable scaffolds. In this regard, WPC has been accepted as an appropriate alternative material to improve biological and physicochemical characteristics

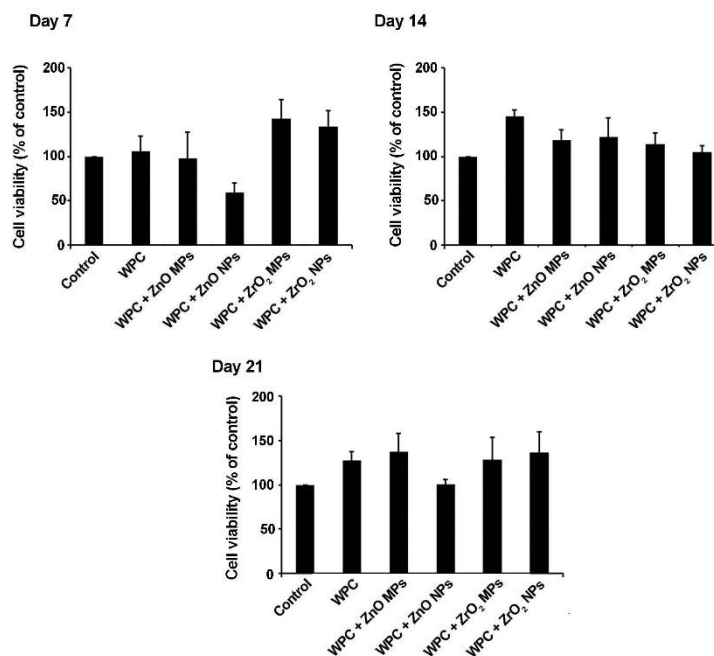


Figure 2. Detection of HDPSCs survival rates, plated on WPC enriched by ZrO₂ and ZnO particles over a period of 21 days. In all the groups, except for WPC + ZnO NPs, an increased cell survival rate was evident. On day 21, the cell viability index in cells from the WPC + ZnO NP group was similar to the control group. These data showed that WPC substrate enriched by ZrO₂ and ZnO particles was suitable for the expansion and culture of HDPSCs

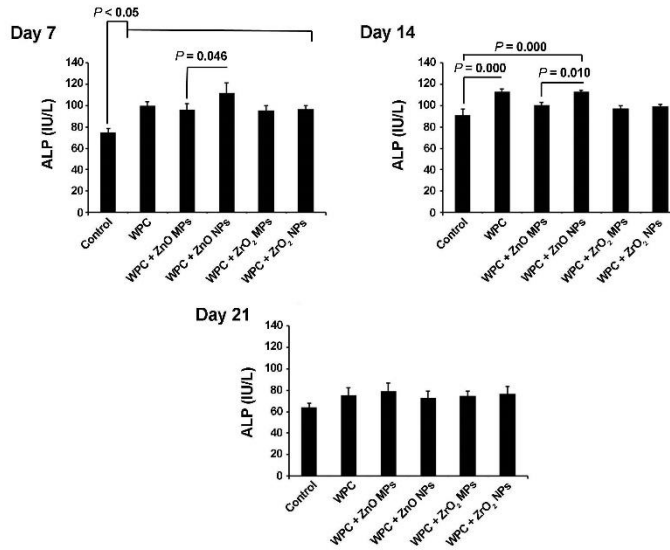


Figure 3. Monitoring odontoblastic property of WPC enriched by ZrO₂ and ZnO particles on HDPSCs via the ALP activity. The ALP activity was found to increase at all the time intervals from different groups. This effect was more evident at 7- and 14-day intervals after cell culture compared to cells from day 21 (n=3) (one-way ANOVA with Tukey tests).

of MTA.²²⁻²⁴ In the current experiment, the ratio of 20–30 wt% of ZrO₂ and ZnO MPs and NPs was used as a radiopacifier, with 70–80% WPC, because of a higher radiopacity than that of dentin, approved by legal international committee ANSI/ADA.^{18,21,25}

Based on MTT assay results, we found a positive effect of WPC on the viability of HDPSCs even after enrichment with ZrO₂ and ZnO MPs and NPs over a period of 21 days. Consistent with this statement, it has previously been demonstrated that WPC enriched

with ZrO₂ NPs was successfully used in direct pulp cap procedures¹⁵ and better biological response was shown with these particles compared to BO in rat connective tissue.²⁶ Notably, a negative effect of WPC containing ZnO NPs was revealed on the HDPSCs survival rate on day 7, while these effects reached near normal levels at the end stage of our study. One explanation would be that distinct concentration of ZnO and pH changes during cell culture at early stage

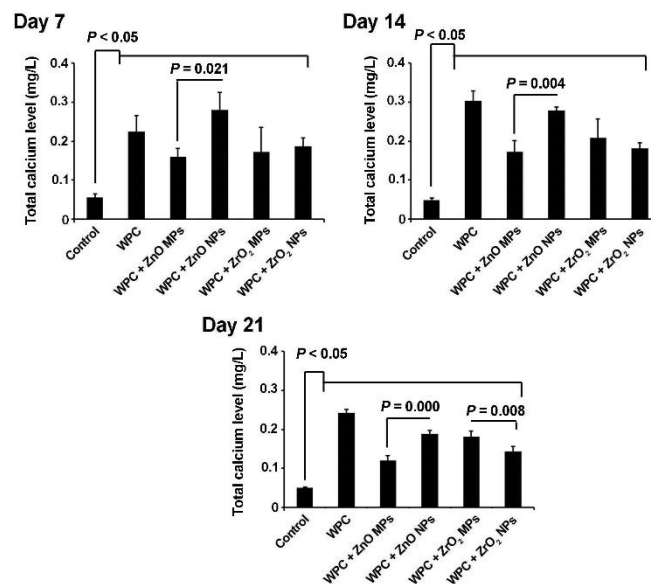


Figure 4. Ionized calcium level in the experiment groups. Total calcium level was shown to increase after cell plating on different substrates at all the time intervals (n=3) (one-way ANOVA with Tukey tests).

could result in lower HDPSCs viability, but these effects decreased over time. Some studies have shown antioxidant and bactericidal activities of ZnO NPs while an excessive Zn concentration promoted ROS production and membrane dysfunction.^{20,27} Therefore, period, concentration and the route of administration must be carefully considered. Considering the positive effect of Zn NPs over time and the necessity of alkaline condition for the induction of dental mineralization, the use of ZnO particles and ZrO₂ MPs/NPs could be applicable in the field of regenerative endodontics.^{15,28}

ALP is a specific functional enzyme in the mineralization of dental tissue and induction of osteogenic/odontogenic differentiation of various SCs.² We found that the combination of particles with WPC resulted in superior effects on the ALP activity, and NPs of ZnO with WPC were significantly better than MPs in this respect. Similar to the dynamics of ALP, the total calcium content also increased in all the groups as compared to the control cells pre-expanded on the plastic surface. Consistent with our data, it has been demonstrated that nanophase ZnO resulted in an enhanced ALP activity and calcium mineral deposition in comparison to microphase ZnO.²⁹ It was previously reported that the treatment of mesenchymal SCs with ZnO NPs could induce osteogenic factors such as osteocalcin and ALP activity, and the production of extracellular matrix, mainly collagen.^{30,31} By providing an expanded surface area and incorporation of various membrane proteins in cultured cells via the application of ZnO NPs, it seems that the osteoblast differentiation would be accelerated by modulating ALP activity. Similar to the effect of ZnO particles, the films coated by zirconia exhibited a profound effect on osteoblast-like MG63 cells, ALP activity and the transcription level of osteogenic markers.³²

According to a previous experiment, an increase in the level of ionized calcium could have promising effects on the orientation of intracellular osteogenic signaling pathway by engaging factor MAPK, while an alkaline pH is thought to promote the osteogenic behavior.³³ The lower calcium content in WPC combined with nano/microparticles compared to WPC also could be related to the higher calcium content in pure WPC. Accordingly, the addition of a radiopacifying agent might restrict the release of calcium ions^{21,34} by reducing solubility but not by aborting cell functionality.³⁵ However, in the current study, a combination of WPC with ZnO NPs resulted in increased calcium ion level contrary to others. By virtue of concomitant changes in the level of ALP and calcium,

one could hypothesize that the mineralization and osteogenic capacity of cells increased on the surface of the scaffolds. With respect to these features, the higher calcium level in ZnO NPs might correlate with an increased solubility rate, possibly inducing the effect on target cells. Similar to ALP levels, calcium levels also diminished during 21-day incubation period. These results confirmed the close correlation between ALP and calcium.

Conclusion

It can be concluded that WPC enriched with ZnO and ZrO₂ particles induced osteogenic/odontogenic trans-differentiation by increasing ALP activity in vitro. Considering the results of the present study, further studies are needed for elucidating underlying interaction of HDPSCs with particles in vivo.

Conflict of Interests

The authors declare no competing interests with regards to the authorship and/or publication of this article.

Authors' contributions

The concept and the design of the study were developed by SR, NGH and PD. The Isolation and culture of human dental pulp stem cells, were carried out by RR. The WPC disks were prepared and interpreted by BD. Data entry and statistical analyses, were carried out by SS and ASM. The manuscript was written by PD and RR. The proof reading was carried out by SR and SHSH. All the authors participated in the literature review.

Acknowledgment

This study was a part of a PhD thesis and supported by a grant from Tabriz University of Medical Sciences. The authors would like to thank the Dental and Periodontal Research Center of Tabriz University of Medical Sciences and the personnel of the Stem Cell Research Center of Tabriz University of Medical Sciences.

Funding

This research was carried out by financial support of the Dental and Periodontal Research Center, Tabriz University of Medical Sciences.

Ethics approval

This research was approved by Research Ethics Committee of Tabriz University of Medical Sciences in 2017.

References

1. Murray PE, Garcia-Godoy F, Hargreaves KM. Regenerative endodontics: a review of current status and a call for action. *J Endod.* 2007;33(4):377-90.doi:10.1016/j.joen.2006.09.013
2. Gronthos S, Brahim J, Li W, Fisher L, Cherman N, Boyde A, et al. Stem cell properties of human dental pulp stem cells. *J Dent Res.* 2002;81(8):531-5.doi.org/10.1177/154405910208100806

3. Potdar PD, Jethmalani YD. Human dental pulp stem cells: applications in future regenerative medicine. *World J Stem Cells*. 2015;7(5):839-40. doi:10.4252/wjsc.v7.i5.839
4. Ajay Sharma L, Sharma A, Dias GJ. Advances in regeneration of dental pulp—a literature review. *J Investig Clin Dent*. 2015;6(2):85-98. doi:10.1111/jicd.12064
5. Witherspoon DE. Vital pulp therapy with new materials: new directions and treatment perspectives—permanent teeth. *J Endod*. 2008;34(7):S25-S8.
6. Sarkar N, Caicedo R, Ritwik P, Moiseyeva R, Kawashima I. Physicochemical basis of the biologic properties of mineral trioxide aggregate. *J Endod*. 2005;31(2):97-100. doi.org/10.1097/01.DON.0000133155.04468.41
7. Parirokh M, Torabinejad M. Mineral trioxide aggregate: a comprehensive literature review—part III: clinical applications, drawbacks, and mechanism of action. *J Endod*. 2010;36(3):400-13. doi: 10.1016/j.joen.2009.09.009
8. Camilleri J. Hydration mechanisms of mineral trioxide aggregate. *Int Endod J*. 2007;40(6):462-70. doi:10.1111/j.1365-2591.2007.01248.x
9. Coomaraswamy KS, Lumley PJ, Hofmann MP. Effect of bismuth oxide radiopacifier content on the material properties of an endodontic Portland cement-based (MTA-like) system. *J Endod*. 2007;33(3):295-8. doi:10.1016/j.joen.2006.11.018
10. Camilleri J, Montesin FE, Papaioannou S, McDonald F, Pitt Ford TR. Biocompatibility of two commercial forms of mineral trioxide aggregate. *Int Endod J*. 2004;37(10):699-704. doi:10.1111/j.1365-2591.2004.00859.x
11. Min K-S, Chang H-S, Bae J-M, Park S-H, Hong C-U, Kim E-C. The induction of heme oxygenase-1 modulates bismuth oxide-induced cytotoxicity in human dental pulp cells. *J Endod*. 2007;33(11):1342-6. doi:10.1016/j.joen.2007.07.012
12. Marciano MA, Costa RM, Camilleri J, Mondelli RFL, Guimarães BM, Duarte MAH. Assessment of color stability of white mineral trioxide aggregate angelus and bismuth oxide in contact with tooth structure. *J Endod*. 2014;40(8):1235-40. doi:10.1016/j.joen.2014.01.044
13. Holland R, de SOUZA V, Murata SS, Nery MJ, Bernabé P, Otoboni Filho JA, et al. Healing process of dog dental pulp after pulpotomy and pulp covering with mineral trioxide aggregate or Portland cement. *Braz Dent J*. 2001:109-13.
14. Laurenti M, Cauda V. ZnO Nanostructures for Tissue Engineering Applications. *Nanomaterials*. 2017;7(11):374. doi:10.3390/nano7110374
15. Marques N, Lourenco Neto N, Fernandes A, Rodini C, Hungaro Duarte M, Rios D, et al. Pulp tissue response to Portland cement associated with different radio pacifying agents on pulpotomy of human primary molars. *J Microsc*. 2015;260(3):281-6. doi:10.1111/jmi.12294
16. Camilleri J, Cutajar A, Mallia B. Hydration characteristics of zirconium oxide replaced Portland cement for use as a root-end filling material. *Dent Mater*. 2011;27(8):845-54. doi:10.1016/j.dental.2011.04.011
17. Li Q, Deacon AD, Coleman NJ. The impact of zirconium oxide nanoparticles on the hydration chemistry and biocompatibility of white Portland cement. *Dent Mater J*. 2013;32(5):808-15.
18. Tanomaru JMG, Storto I, da Silva GF, Bosso R, Costa BC, Bernardi MIB, et al. Radiopacity, pH and antimicrobial activity of Portland cement associated with micro- and nanoparticles of zirconium oxide and niobium oxide. *Dent Mater J*. 2014;33(4):466-70.
19. Boyd D, Li H, Tanner DA, Towler M, Wall J. The antibacterial effects of zinc ion migration from zinc-based glass polyalkenoate cements. *J Mater Sci Mater Med*. 2006;17(6):489-94. doi:10.1007/s10856-006-8930-6
20. Soren S, Kumar S, Mishra S, Jena PK, Verma SK, Parhi P. Evaluation of antibacterial and antioxidant potential of the zinc oxide nanoparticles synthesized by aqueous and polyol method. *Microb Pathog*. 2018. doi:10.1016/j.micpath.2018.03.048
21. Guerreiro-Tanomaru JM, Trindade-Junior A, Cesar Costa B, da Silva GF, Drullis Cifali L, Basso Bernardi MI, et al. Effect of zirconium oxide and zinc oxide nanoparticles on physicochemical properties and antibiologic activity of a calcium silicate-based material. *Sci World J*. 2014;2014. doi: 10.1155/2014/975213
22. Dreger LAS, Felipe WT, Reyes-Carmona JF, Felipe GS, Bortoluzzi EA, Felipe MCS. Mineral trioxide aggregate and Portland cement promote biomineralization in vivo. *J Endod*. 2012;38(3):324-9. doi: 10.1016/j.joen.2011.11.006
23. Hwang Y-C, Kim D-H, Hwang I-N, Song S-J, Park Y-J, Koh J-T, et al. Chemical constitution, physical properties, and biocompatibility of experimentally manufactured Portland cement. *J Endod*. 2011;37(1):58-62. doi:10.1016/j.joen.2010.09.004
24. Shahi S, Yavari HR, Rahimi S, Eskandarinezhad M, Shakouei S, Unchi M. Comparison of the sealing ability of mineral trioxide aggregate and Portland cement used as root-end filling materials. *J Oral Sci*. 2011;53(4):517-22.
25. Duarte MAH, D'arc de Oliveira EI G, Vivian RR, Tanomaru JMG, Tanomaru Filho M, de Moraes IG. Radiopacity of portland cement associated with different radiopacifying agents. *J Endod*. 2009;35(5):737-40. doi:10.1016/j.joen.2009.02.006
26. Silva GF, Bosso R, Ferino RV, Tanomaru-Filho M, Bernardi MI, Guerreiro-Tanomaru JM, et al. Microparticulated and nanoparticulated zirconium oxide added to calcium silicate cement: evaluation of physicochemical and biological properties. *J Biomed Mater Res A*. 2014;102(12):4336-45. doi: 10.1002/jbm.a.35099
27. Nair S, Sasidharan A, Rani VD, Menon D, Nair S, Manzoor K, et al. Role of size scale of ZnO nanoparticles and microparticles on toxicity toward bacteria and osteoblast cancer cells. *J Mater Sci Mater Med*. 2009;20(1):235. doi:10.1007/s10856-008-3548-5
28. Tamburić S, Vuleta G, Ognjanović J. In vitro release of calcium and hydroxyl ions from two types of calcium hydroxide preparation. *Int Endod J*. 1993;26(2):125-30.
29. Colon G, Ward BC, Webster TJ. Increased osteoblast and decreased Staphylococcus epidermidis functions on nanophase ZnO and TiO₂. *J Biomed Mater Res A*. 2006;78(3):595-604. doi: 10.1002/jbm.a.30789
30. Foroutan T. The effects of zinc oxide nanoparticles on differentiation of human mesenchymal stem cells to osteoblast. *Nanomedicine Journal*. 2014;1(5):308-14. doi: 10.1088/0957-4484/24/47/475102
31. Yusa K, Yamamoto O, Iino M, Takano H, Fukuda M, Qiao Z, et al. Eluted zinc ions stimulate osteoblast differentiation and mineralization in human dental pulp stem cells for bone tissue engineering. *Arch Oral Biol*. 2016;71:162-9. doi:10.1016/j.archoralbio.2016.07.010
32. Zhang S, Sun J, Xu Y, Qian S, Wang B, Liu F, et al. Adhesion, proliferation and differentiation of osteoblasts on zirconia films prepared by cathodic arc deposition. *Bio-Med Mater Eng*. 2013;23(5):373-85. doi:10.3233/BME-130761
33. Jung JY, Woo SM, Lee BN, Koh JT, Nör J, Hwang YC. Effect of Biodentine and Bioaggregate on odontoblastic differentiation via mitogen-activated protein kinase pathway

10 Rahimi et al.

in human dental pulp cells. *Int Endod J.* 2015;48(2):177-84.doi:10.1111/iej.12298

34. Duarte MAH, Minotti PG, Rodrigues CT, Zapata RO, Bramante CM, Tanomaru Filho M, et al. Effect of different radiopacifying agents on the physicochemical properties of

white Portland cement and white mineral trioxide aggregate.

J Endod. 2012;38(3):394-7.doi: 10.1016/j.joen.2011.11.005

35. Aguiar AS. Antimicrobial activity and ph of calcium hydroxide and zinc oxide nanoparticles intracanal medication and association with chlorhexidine. *J Contemp Dent Pract.* 2015;16(8):624-9.